

BASIC CONCEPTS OF AND TOOLS FOR GENDER ANALYSIS



Department of the Interior and Local Government



Office of the President
Philippine Commission on Women

What is gender analysis?

- Process of asking or investigating key questions at the beginning of a planning process that will help :
 - *identify gaps or differences between women and men, girls and boys*
 - *Understand why these gaps exist and persist*
 - *Choose what actions to take to reduce the gap or address the issue*
- Process of considering how women and men, girls and boys, and their social relations are affected by the way an organization operates, or a development program is being implemented



Why Gender Analysis?

- ❖ It is a tool to understand social processes and respond with informed and equitable options. To identify **gender issue/s** and **design strategies** to address gender issues relevant to a proposed/existing PPAs.
- ❖ It contributes to being more accurate in disaggregating the factors that create and sustain one condition. Some questions to be asked:
 - WHO DOES WHAT
 - WHO HAS WHAT
 - WHO DECIDES
 - HOW
 - WHO GAINS
 - WHO LOSES
- ❖ It explores and highlights the relationship of women and men in society and the inequalities in those relationships
- ❖ Seeks ways to bring about a more balanced relations between women and men

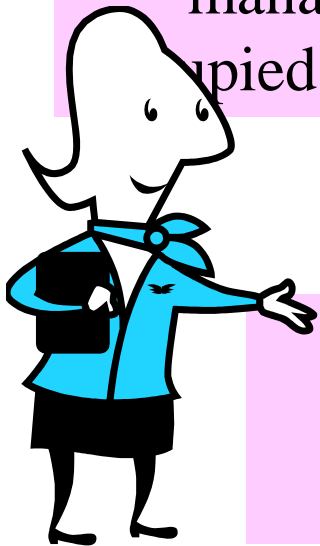


Why?



25 % positions are less occupied by women

management positions is occupied more men than women



20% of the candidates are women

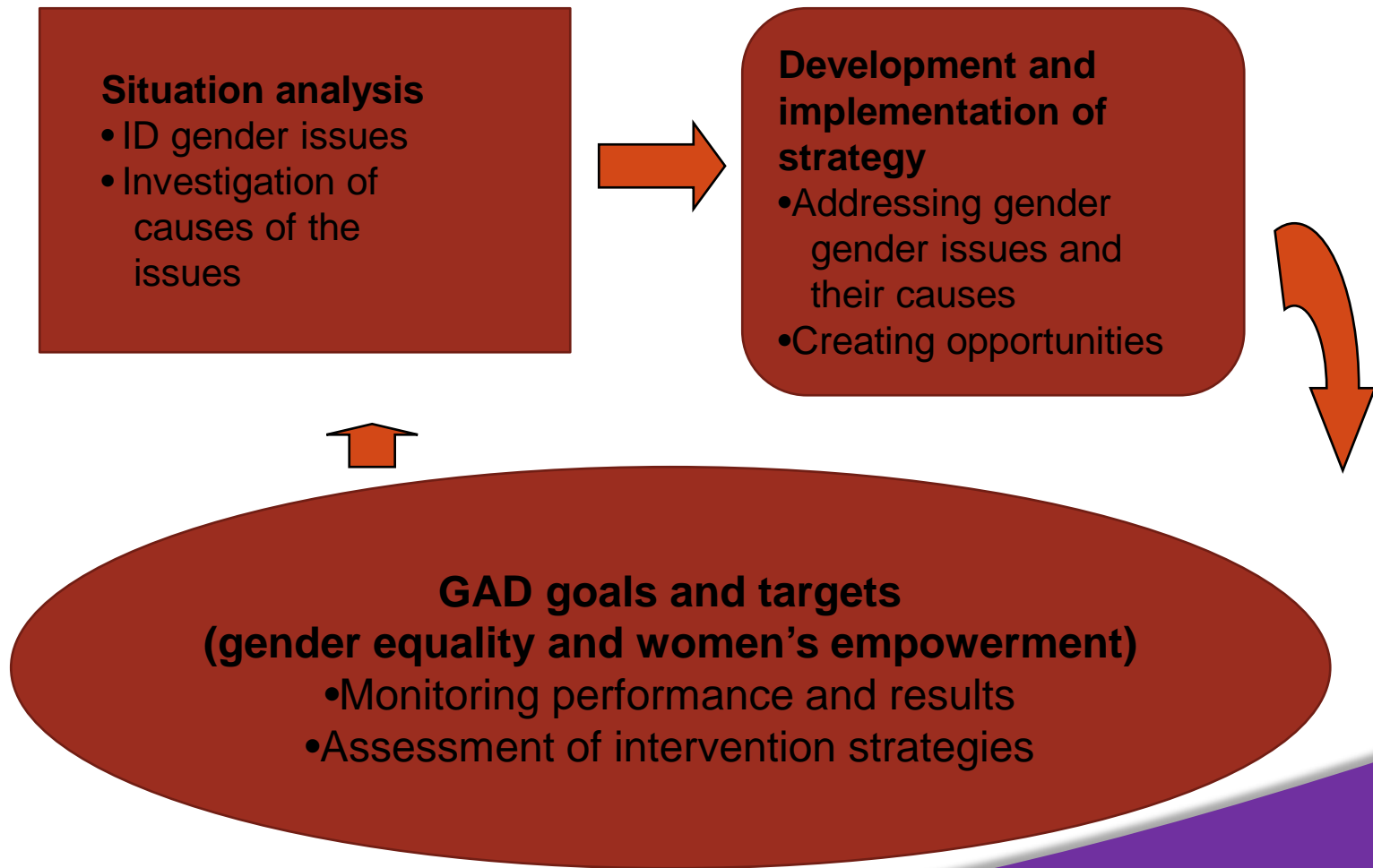


Levels of gender analysis

- **Household and community level**
 - Gender gaps
 - Gender analysis matrix (GAM)
 - 24 hour activity profile
- **Project or program**
 - Harmonized GAD Guidelines (HGDDG)
- **Organization or institution**
 - PCW's Gender Mainstreaming Evaluation Framework (GMEF)
 - Gender-responsive LGUs (GeRL Ka Ba Self Assessment)



Gender analysis-planning flow



1. Surface the differential situation of men and women (access to Family Planning services)

(Only data on the access of couples to FP supplies is available. There is no sex disaggregated data.)

- 70% access from public facilities (Hosp., RHU, BHS, BSPO, BHW)
- 28% from private (hospitals, clinics, pharmacies)
- Do both men/women access modern FP supplies? Who go to the facility more often, males or females?



- If men's access rate is low, why? What are the reasons?
 - Macho image? Perceived reduction/erosion of virility?
 - Source? Where would they prefer to get if from? Govt.? Private? Female health worker? Male health worker?
 - Educational levels?
 - Work? At what time of the day are they available?
- What would make them access natural or modern FP supplies?

- What is the gender dimension of family planning? Why is FP considered a woman's responsibility?
- Where are the women in most time of the day?
- What prevent/hinder them from accessing FP?
 - Husband's decision
 - Work? Household chores?
 - Educational level

2. Identify the differential roles and responsibilities of men and women

- What are the gender roles assigned to males?
 - Productive..., what else?
- What are the gender roles assigned to females?
 - Reproductive..., what else?
- How are these perceived roles affecting access to RP/FP?



•What is the role of the husband over the decision to access a birthing facility?

•Should men assume the role of an enabler, encouraging the birthing woman to deliver at the hospital/health center?



3. Analyze the differential access to resources of men and women

- Why do women still prefer to deliver with the assistance of hilots?
- What are the factors affecting women's access to a birthing facility?
 - Availability of a birthing facility?
 - Access road?
 - Money?
 - Woman's level of education?
 - Knowledge? Information?





- Would it be easy for pregnant women to have prenatal if the road to the health center or hospital is like this?
- Would it be easy to bring birthing mothers to the hospital in this road condition?



4. Analyze the differential impact of programs or project interventions to men and women

- How would responsible parenthood and family planning services benefit the man?
- What will be the impact of having the “desired” number of children to the man?
- Lesser number of dependents?

- How would responsible parenthood and family planning services benefit the woman?
- What will be the impact of having the “desired” number of children to the woman?
- More time for productive work? Better health?





POVERTY REDUCTION

Ayod

Maternal and child health

Factors contributing to maternal deaths

- Distance to health facilities
- Wait & see attitude
- Late referrals

Gender Analysis Tool to understand the community Applying the 24 Hour Activity Profile



Applying the 24 Hour Activity Profile

❖ **Productive**

- Involves production of goods and services for consumption and trade
- Usually with a cash value

❖ **Reproductive**

- Care and maintenance of the household/family
- Includes even formation of values and the transmission of traditions
- Crucial to human survival yet often devalued



Applying the 24 Hour Activity Profile

❖ **Community work**

- Organization of social events and services, ceremonies and celebrations;
- Participation in groups and organization;
- Involves considerable volunteer time;
- Venue for decision-making

❖ **Leisure**

- Time for oneself
- Recreation
- Recharge physically, mentally, spiritually



WORKSHOP (5 minutes)

24 Hour Activity Profiling

Activities	Time	Time Spent	Gender Roles

